



Star Infinity

COMFORT + QUALITY

WOW



NATURAL
MINED
DIAMONDS



Star Infinity

LUXURIOUS WEDDING BANDS

COMFORT ♦ PREMIUM ♦ SLIM



ROUNDS

FULL ETERNITY (Page 6-9)



PRINCESS

3/4TH WAY (Page 10-13)



EMERALD

HALF WAY (Page 14-17)



MARQUISE

EAST WEST (Page 18-19)



OVAL

5 STONE (Page 20-23)

KEY FEATURES

- CUSTOM MADE
- COMFORT FIT
- RING SIZES 4.5 TO 10
- DIAMOND SIZES 0.10CTS TO 0.75CTS
- SOFT CLAW PRONG
- CUSTOM FIT SOCKETS
- NATURAL AND LAB GROWN DIAMONDS
- ETERNITY, 1/2 WAY 3/4TH WAY, EAST-WEST, 5 STONE
- FINEST CRAFTSMANSHIP
- CALIBRATED DIAMONDS (ROUNDS & FANCY CUTS)
- 14KT, 18KT & PLATINUM

MARKETING SUPPORT



DISPLAY TRAY

CUSTOM DISPLAYS FOR IN - SHOWCASE PROGRAM

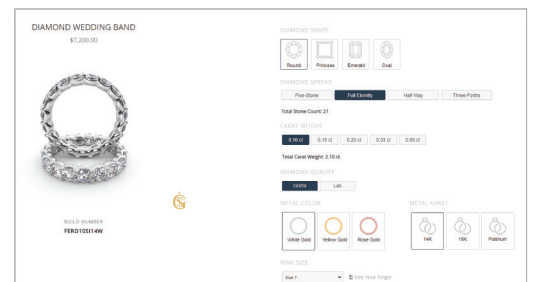
CATALOGS



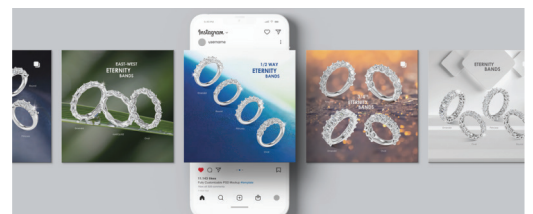
RETAIL 2.5 KEY CATALOG FOR NATURAL & LAB GROWN DIAMONDS

DIGITAL CONFIGURATOR

AVAILABLE FOR YOUR WEBSITE WITH A FEW EASY STEPS



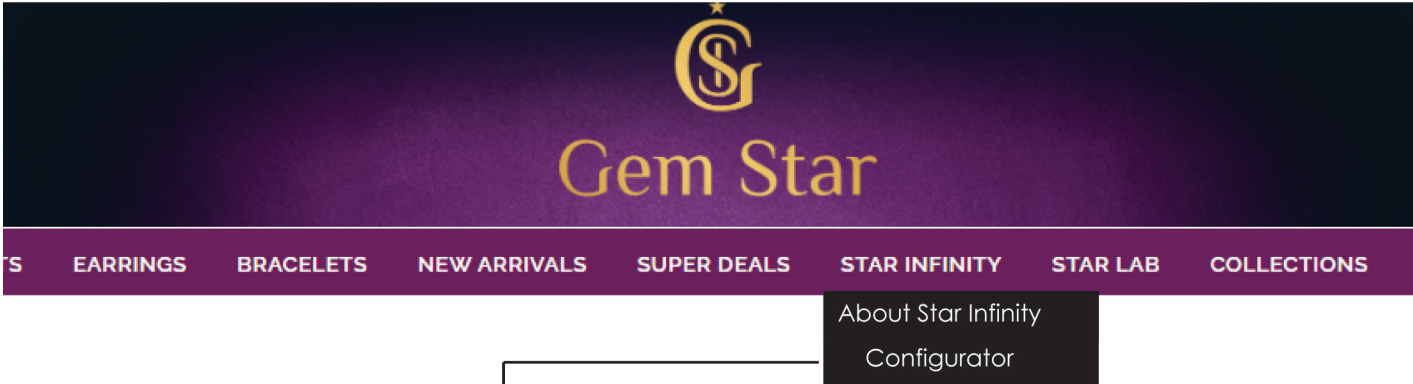
SOCIAL MEDIA POSTS



ONLINE CONFIGURATOR TO BUILD A BAND

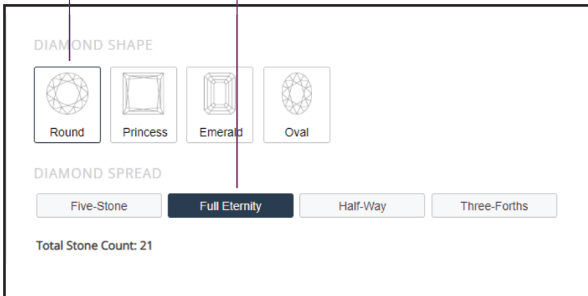
1

Login to www.gemstarco.com and select Configurator from dropdown menu



Configurator

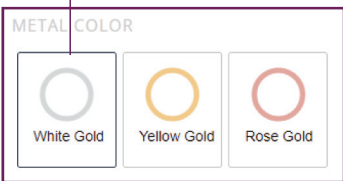
2 Select diamond shape and Diamond Spread



3 Select Diamond Size and diamond quality (GHSI = Natural dia/ LAB = Lab grown dia)



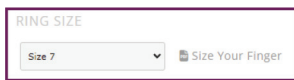
4 Select metal color



5 Select metal Karat



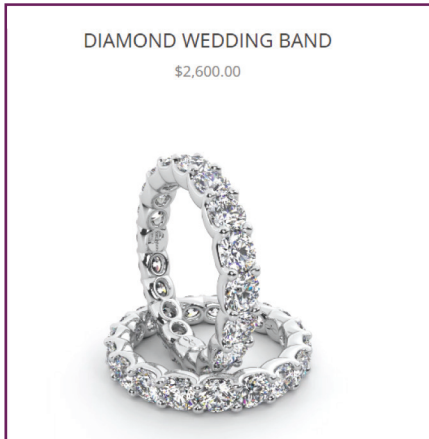
6 Select your ring size



CLICK ON ADD TO ORDER TO
FINISH YOUR PURCHASE

ADD TO ORDER

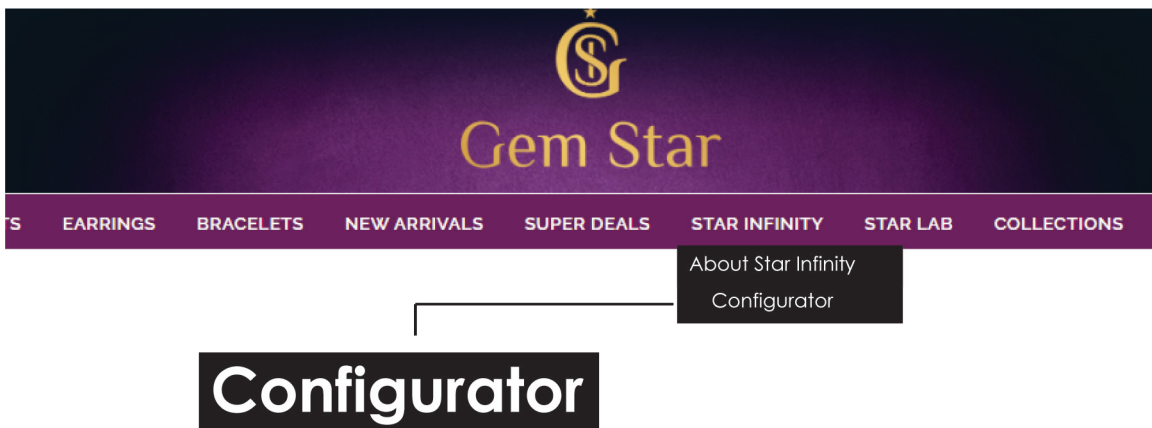
YOUR RING IS READY



ONLINE CONFIGURATOR FOR YOUR WEBSITE

STEP BY STEP GUIDE TO HAVE OUR I-FRAME ON YOUR WEBSITE

- 1 Login to www.gemstarco.com and select Configurator from dropdown menu



2 ADD THE MARKUP

Want to have this configurator on your website? Enter your markup below and we will email you the iframe coding and instructions.

Markup: x

PUT 3 FOR TRIPPLE KEY (2, 2.25, 2.5, 3.....ETC)

Thank you Sumit for requesting a Gem Star Band Configurator IFrame.

Please follow the instructions below to place the configurator on your website.

Step 1: Create a blank page on your website where the configurator will be placed.

Step 2: Copy and paste the iFrame code below into that page on your website.

Step 3: Create a link in the menu or banner on the website homepage linking the user to this new page.

The pricing on the configurator will include the 300x markup you had entered.

iFrame coding to copy/paste:

```
<iframe src="https://www.gemstarco.com/starinfinity.cfm?markup=300&retailer=13589" frameborder="0" width="100%" height="1000">
</iframe>
```

If you have any questions or need assistance, please contact us.

Thank you.

3 RECEIVE AN EMAIL FROM US

YOU WILL RECEIVE AN EMAIL WITH A
I-FRAME CODE

FORWARD THE EMAIL TO YOUR
WEB DEVELOPER

IN MINUTES THE I-FRAME WILL BE
ON YOUR WEBSITE

PRINCESS



14kt

Stone Size	0.10ct (Each)	0.15ct (Each)	0.20ct (Each)	0.33ct (Each)	0.50ct (Each)
4.5	\$5,375	\$7,625	\$12,063	\$20,813	\$49,500
5	\$5,563	\$8,000	\$12,688	\$20,875	\$49,563
5.5	\$5,625	\$8,063	\$12,750	\$20,938	\$52,563
6	\$5,813	\$8,438	\$12,813	\$22,000	\$52,625
6.5	\$5,875	\$8,500	\$13,313	\$22,063	\$52,688
7	\$5,938	\$8,813	\$13,375	\$22,125	\$55,000
7.5	\$6,063	\$8,875	\$13,938	\$23,250	\$55,625
8	\$6,125	\$8,938	\$14,000	\$23,313	\$55,688
8.5	\$6,313	\$9,188	\$14,063	\$23,375	\$55,750
9	\$6,375	\$9,250	\$14,563	\$24,500	\$58,688
9.5	\$6,500	\$9,313	\$14,625	\$24,563	\$58,750
10	\$6,563	\$9,625	\$15,188	\$24,625	\$58,813

18kt

Stone Size	0.10ct (Each)	0.15ct (Each)	0.20ct (Each)	0.33ct (Each)	0.50ct (Each)
4.5	\$5,500	\$7,813	\$12,250	\$21,125	\$49,813
5	\$5,750	\$8,188	\$12,875	\$21,188	\$49,875
5.5	\$5,813	\$8,250	\$12,938	\$21,250	\$52,875
6	\$5,938	\$8,563	\$13,000	\$22,313	\$52,938
6.5	\$6,000	\$8,625	\$13,500	\$22,375	\$53,000
7	\$6,063	\$9,000	\$13,563	\$22,438	\$53,063
7.5	\$6,188	\$9,063	\$14,188	\$23,563	\$55,938
8	\$6,250	\$9,125	\$14,250	\$23,625	\$56,000
8.5	\$6,500	\$9,438	\$14,313	\$23,688	\$56,063
9	\$6,563	\$9,500	\$14,813	\$24,813	\$59,063
9.5	\$6,750	\$9,563	\$14,875	\$24,875	\$59,125
10	\$6,813	\$9,875	\$15,500	\$24,938	\$59,188

FULL ETERNITY BANDS

	STONE SIZE	Total Dia Wt (Size 7)
 (A) FEPR10SI	0.10ct (Each)	2.40ct tw
 (B) FEPR15SI	0.15ct (Each)	3.30ct tw
 (C) FEPR20SI	0.20ct (Each)	4.20ct tw
 (D) FEPR32SI	0.33ct (Each)	5.76ct tw
 (E) FEPR53SI	0.50ct (Each)	9.01ct tw


ALL STYLES AVAILABLE IN YELLOW, WHITE & ROSE GOLD

PLATINUM

Stone Size	0.10ct (Each)	0.15ct (Each)	0.20ct (Each)	0.33ct (Each)	0.50ct (Each)
4.5	\$5,750	\$8,063	\$12,500	\$21,375	\$50,063
5	\$5,938	\$8,438	\$13,125	\$21,438	\$50,125
5.5	\$6,000	\$8,500	\$13,188	\$21,500	\$53,063
6	\$6,188	\$8,813	\$13,250	\$22,563	\$53,125
6.5	\$6,250	\$8,875	\$13,750	\$22,625	\$53,188
7	\$6,313	\$9,250	\$13,813	\$22,688	\$53,250
7.5	\$6,438	\$9,313	\$14,438	\$23,813	\$56,188
8	\$6,500	\$9,375	\$14,500	\$23,875	\$56,250
8.5	\$6,750	\$9,688	\$14,563	\$23,938	\$56,313
9	\$6,813	\$9,750	\$15,063	\$25,063	\$59,313
9.5	\$7,000	\$9,813	\$15,125	\$25,125	\$59,375
10	\$7,063	\$10,125	\$15,750	\$25,188	\$59,438

ROUND

FULL ETERNITY BANDS

STONE SIZE	Total Dia Wt (Size 7)	
0.10ct (Each)	2.10ct tw	 (A) FERD10SI
0.15ct (Each)	2.85ct tw	 (B) FERD15SI
0.20ct (Each)	3.60ct tw	 (C) FERD20SI
0.33ct (Each)	4.80ct tw	 (D) FERD32SI
0.50ct (Each)	7.42ct tw	 (E) FERD53SI



14kt

Stone Size	0.10ct (Each)	0.15ct (Each)	0.20ct (Each)	0.33ct (Each)	0.50ct (Each)
Ring Size					
4.5	\$5,375	\$8,563	\$12,813	\$20,625	\$45,500
5	\$5,625	\$8,625	\$12,875	\$20,688	\$45,563
5.5	\$5,688	\$8,688	\$12,938	\$22,063	\$45,625
6	\$5,875	\$9,063	\$13,563	\$22,125	\$48,938
6.5	\$5,938	\$9,125	\$13,625	\$22,188	\$49,000
7	\$6,000	\$9,188	\$13,688	\$22,250	\$49,063
7.5	\$6,125	\$9,500	\$14,313	\$23,500	\$49,125
8	\$6,188	\$9,563	\$14,375	\$23,563	\$52,375
8.5	\$6,438	\$9,938	\$14,438	\$23,625	\$52,438
9	\$6,500	\$10,000	\$15,063	\$24,938	\$52,500
9.5	\$6,688	\$10,063	\$15,125	\$25,000	\$52,563
10	\$6,750	\$10,438	\$15,813	\$25,063	\$55,875

ALL STYLES AVAILABLE IN YELLOW, WHITE & ROSE GOLD

18kt

Stone Size	0.10ct (Each)	0.15ct (Each)	0.20ct (Each)	0.33ct (Each)	0.50ct (Each)
Ring Size					
4.5	\$5,625	\$8,813	\$13,188	\$21,063	\$46,000
5	\$5,875	\$8,875	\$13,250	\$21,125	\$46,063
5.5	\$5,938	\$8,938	\$13,313	\$22,500	\$46,125
6	\$6,188	\$9,313	\$13,938	\$22,563	\$49,438
6.5	\$6,250	\$9,375	\$14,000	\$22,625	\$49,500
7	\$6,313	\$9,438	\$14,063	\$22,688	\$49,563
7.5	\$6,438	\$9,750	\$14,688	\$24,000	\$49,625
8	\$6,500	\$9,813	\$14,750	\$24,063	\$52,938
8.5	\$6,750	\$10,250	\$14,813	\$24,125	\$53,000
9	\$6,813	\$10,313	\$15,500	\$25,438	\$53,063
9.5	\$7,000	\$10,375	\$15,563	\$25,500	\$53,125
10	\$7,063	\$10,813	\$16,250	\$25,563	\$56,375

Platinum

Stone Size	0.10ct (Each)	0.15ct (Each)	0.20ct (Each)	0.33ct (Each)	0.50ct (Each)
Ring Size					
4.5	\$6,000	\$9,188	\$13,500	\$21,313	\$46,250
5	\$6,250	\$9,250	\$13,563	\$21,375	\$46,313
5.5	\$6,313	\$9,313	\$13,625	\$22,750	\$46,375
6	\$6,563	\$9,625	\$14,250	\$22,813	\$49,688
6.5	\$6,625	\$9,688	\$14,313	\$22,875	\$49,750
7	\$6,688	\$9,750	\$14,375	\$22,938	\$49,813
7.5	\$6,813	\$10,125	\$15,000	\$24,250	\$49,875
8	\$6,875	\$10,188	\$15,063	\$24,313	\$53,188
8.5	\$7,125	\$10,625	\$15,125	\$24,375	\$53,250
9	\$7,188	\$10,688	\$15,750	\$25,750	\$53,313
9.5	\$7,375	\$10,750	\$15,813	\$25,813	\$53,375
10	\$7,438	\$11,188	\$16,500	\$25,875	\$56,688

EMERALD



14kt

Stone Size	0.10ct (Each)	0.15ct (Each)	0.20ct (Each)	0.33ct (Each)	0.50ct (Each)
Ring Size					
4.5	\$6,938	\$8,938	\$14,063	\$24,313	\$49,313
5	\$7,063	\$9,313	\$14,125	\$24,375	\$49,375
5.5	\$7,188	\$9,375	\$14,688	\$24,500	\$49,438
6	\$7,250	\$9,688	\$14,750	\$25,563	\$52,188
6.5	\$7,313	\$9,750	\$15,313	\$25,625	\$52,250
7	\$7,500	\$10,063	\$15,375	\$25,688	\$52,313
7.5	\$7,750	\$10,125	\$16,000	\$26,813	\$55,063
8	\$7,813	\$10,500	\$16,125	\$26,875	\$55,125
8.5	\$8,000	\$10,563	\$16,750	\$28,063	\$55,188
9	\$8,063	\$10,875	\$16,813	\$28,125	\$57,938
9.5	\$8,313	\$10,938	\$16,875	\$28,188	\$58,000
10	\$8,563	\$11,313	\$17,438	\$29,375	\$58,063

18kt

Stone Size	0.10ct (Each)	0.15ct (Each)	0.20ct (Each)	0.33ct (Each)	0.50ct (Each)
Ring Size					
4.5	\$7,250	\$9,250	\$14,375	\$24,688	\$49,688
5	\$7,313	\$9,625	\$14,438	\$24,750	\$49,750
5.5	\$7,500	\$9,688	\$15,000	\$24,813	\$49,813
6	\$7,563	\$10,000	\$15,063	\$25,938	\$52,563
6.5	\$7,625	\$10,063	\$15,688	\$26,000	\$52,625
7	\$7,813	\$10,375	\$15,750	\$26,063	\$52,688
7.5	\$8,063	\$10,438	\$16,313	\$27,250	\$55,438
8	\$8,125	\$10,813	\$16,563	\$27,313	\$55,500
8.5	\$8,375	\$10,875	\$17,188	\$28,500	\$55,563
9	\$8,438	\$11,250	\$17,250	\$28,563	\$58,375
9.5	\$8,625	\$11,313	\$17,313	\$28,625	\$58,438
10	\$8,938	\$11,688	\$17,875	\$29,813	\$58,500

FULL ETERNITY BANDS

	STONE SIZE	Total Dia Wt (Size 7)
 (A) FEEM10SI	0.10ct (Each)	2.90ct tw
 (B) FEEM15SI	0.15ct (Each)	3.75ct tw
 (C) FEEM20SI	0.20ct (Each)	4.60ct tw
 (D) FEEM32SI	0.33ct (Each)	6.40ct tw
 (E) FEEM53SI	0.50ct (Each)	9.54ct tw

ALL STYLES AVAILABLE IN YELLOW, WHITE & ROSE GOLD

Platinum

Stone Size	0.10ct (Each)	0.15ct (Each)	0.20ct (Each)	0.33ct (Each)	0.50ct (Each)
Ring Size					
4.5	\$7,563	\$9,563	\$14,625	\$24,938	\$49,938
5	\$7,625	\$9,938	\$14,688	\$25,000	\$50,000
5.5	\$7,813	\$10,000	\$15,313	\$25,063	\$50,063
6	\$7,875	\$10,313	\$15,375	\$26,188	\$52,813
6.5	\$7,938	\$10,375	\$15,938	\$26,250	\$52,875
7	\$8,063	\$10,750	\$16,000	\$26,313	\$52,938
7.5	\$8,313	\$10,813	\$16,563	\$27,500	\$55,688
8	\$8,375	\$11,188	\$16,813	\$27,563	\$55,750
8.5	\$8,625	\$11,250	\$17,438	\$28,750	\$55,813
9	\$8,688	\$11,563	\$17,500	\$28,813	\$58,563
9.5	\$8,875	\$11,625	\$17,563	\$28,875	\$58,625
10	\$9,188	\$12,000	\$18,125	\$30,063	\$58,688

OVAL

FULL ETERNITY BANDS



14kt

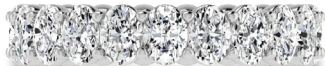
Stone Size	0.10ct (Each)	0.15ct (Each)	0.20ct (Each)	0.33ct (Each)	0.50ct (Each)
Ring Size					
4.5	\$6,813	\$9,500	\$13,938	\$23,688	\$46,500
5	\$6,875	\$9,938	\$14,688	\$23,750	\$46,563
5.5	\$7,063	\$10,000	\$14,750	\$25,188	\$49,688
6	\$7,125	\$10,438	\$14,813	\$25,250	\$49,750
6.5	\$7,375	\$10,500	\$15,500	\$25,313	\$49,813
7	\$7,438	\$10,563	\$15,563	\$25,375	\$49,875
7.5	\$7,688	\$10,938	\$16,250	\$26,750	\$53,000
8	\$7,938	\$11,000	\$16,313	\$26,813	\$53,063
8.5	\$8,000	\$11,438	\$17,125	\$26,875	\$53,125
9	\$8,063	\$11,500	\$17,188	\$28,313	\$53,188
9.5	\$8,313	\$11,938	\$17,250	\$28,375	\$56,250
10	\$8,563	\$12,000	\$17,938	\$28,438	\$56,313

Total Dia Wt (Size 7) STONE SIZE



(A) FEOV10SI

2.50ct tw 0.10ct (Each)



(B) FEOV15SI

3.15ct tw 0.15ct (Each)



(C) FEOV20SI

3.80ct tw 0.20ct (Each)



(D) FEOV32SI

5.12ct tw 0.33ct (Each)



(E) FEOV53SI

7.95ct tw 0.50ct (Each)

ALL STYLES AVAILABLE IN YELLOW, WHITE & ROSE GOLD

18kt

Stone Size	0.10ct (Each)	0.15ct (Each)	0.20ct (Each)	0.33ct (Each)	0.50ct (Each)
Ring Size					
4.5	\$7,063	\$9,813	\$14,250	\$24,063	\$47,000
5	\$7,125	\$10,250	\$15,063	\$24,125	\$47,063
5.5	\$7,375	\$10,313	\$15,125	\$25,625	\$50,188
6	\$7,438	\$10,750	\$15,188	\$25,688	\$50,250
6.5	\$7,688	\$10,813	\$15,813	\$25,750	\$50,313
7	\$7,750	\$10,875	\$15,875	\$25,813	\$50,375
7.5	\$8,000	\$11,313	\$16,625	\$27,188	\$53,500
8	\$8,250	\$11,375	\$16,688	\$27,250	\$53,563
8.5	\$8,313	\$11,813	\$17,500	\$27,313	\$53,625
9	\$8,375	\$11,875	\$17,563	\$28,750	\$53,688
9.5	\$8,688	\$12,375	\$17,625	\$28,813	\$56,875
10	\$9,000	\$12,438	\$18,375	\$28,875	\$56,938

Platinum

Stone Size	0.10ct (Each)	0.15ct (Each)	0.20ct (Each)	0.33ct (Each)	0.50ct (Each)
Ring Size					
4.5	\$7,438	\$10,188	\$14,500	\$24,375	\$47,250
5	\$7,500	\$10,625	\$15,313	\$24,438	\$47,313
5.5	\$7,750	\$10,688	\$15,375	\$25,875	\$50,500
6	\$7,813	\$11,125	\$15,438	\$25,938	\$50,563
6.5	\$8,063	\$11,188	\$16,125	\$26,000	\$50,625
7	\$8,125	\$11,250	\$16,188	\$26,063	\$50,688
7.5	\$8,375	\$11,688	\$16,875	\$27,438	\$53,813
8	\$8,625	\$11,750	\$16,938	\$27,500	\$53,875
8.5	\$8,688	\$12,188	\$17,750	\$27,563	\$53,938
9	\$8,750	\$12,250	\$17,813	\$29,000	\$54,000
9.5	\$9,063	\$12,688	\$17,875	\$29,063	\$57,125
10	\$9,375	\$12,750	\$18,625	\$29,125	\$57,188

PRINCESS



3/4TH WAY WEDDING BANDS

14kt

Stone Size	0.10ct (Each)	0.15ct (Each)	0.20ct (Each)	0.33ct (Each)	0.50ct (Each)
------------	---------------	---------------	---------------	---------------	---------------

Ring Size

4.5	\$4,563	\$6,813	\$10,813	\$15,938	\$40,375
5	\$4,625	\$6,875	\$10,875	\$16,000	\$40,438
5.5	\$4,688	\$6,938	\$10,938	\$16,063	\$40,500
6	\$4,750	\$7,000	\$11,000	\$16,125	\$40,563
6.5	\$4,813	\$7,063	\$11,063	\$16,188	\$40,625
7	\$4,875	\$7,125	\$11,125	\$16,250	\$40,688
7.5	\$4,938	\$7,188	\$11,188	\$16,313	\$40,750
8	\$5,000	\$7,250	\$11,688	\$16,375	\$40,813
8.5	\$5,063	\$7,313	\$11,750	\$16,438	\$40,875
9	\$5,125	\$7,375	\$13,000	\$17,625	\$43,938
9.5	\$5,188	\$7,938	\$13,625	\$18,813	\$47,000
10	\$5,250	\$8,000	\$13,688	\$18,875	\$47,063

18kt

Stone Size	0.10ct (Each)	0.15ct (Each)	0.20ct (Each)	0.33ct (Each)	0.50ct (Each)
------------	---------------	---------------	---------------	---------------	---------------

Ring Size

4.5	\$4,688	\$7,000	\$11,000	\$16,188	\$40,625
5	\$4,750	\$7,063	\$11,063	\$16,313	\$40,750
5.5	\$4,813	\$7,125	\$11,125	\$16,375	\$40,813
6	\$4,875	\$7,188	\$11,250	\$16,438	\$40,938
6.5	\$4,938	\$7,250	\$11,313	\$16,500	\$41,000
7	\$5,000	\$7,313	\$11,375	\$16,625	\$41,125
7.5	\$5,063	\$7,375	\$11,438	\$16,688	\$41,188
8	\$5,125	\$7,438	\$12,063	\$16,750	\$41,313
8.5	\$5,188	\$7,500	\$12,125	\$16,875	\$41,375
9	\$5,250	\$7,875	\$13,438	\$18,125	\$44,500
9.5	\$5,313	\$8,313	\$14,063	\$19,313	\$47,625
10	\$5,375	\$8,375	\$14,125	\$19,438	\$47,750

Platinum

Stone Size	0.10ct (Each)	0.15ct (Each)	0.20ct (Each)	0.33ct (Each)	0.50ct (Each)
------------	---------------	---------------	---------------	---------------	---------------

Ring Size

4.5	\$4,938	\$7,188	\$11,250	\$16,438	\$40,750
5	\$5,000	\$7,250	\$11,313	\$16,500	\$40,875
5.5	\$5,063	\$7,313	\$11,375	\$16,625	\$41,000
6	\$5,125	\$7,375	\$11,438	\$16,688	\$41,125
6.5	\$5,188	\$7,438	\$11,500	\$16,750	\$41,250
7	\$5,250	\$7,500	\$11,563	\$16,875	\$41,375
7.5	\$5,313	\$7,563	\$11,688	\$16,938	\$41,500
8	\$5,375	\$7,625	\$12,313	\$17,000	\$41,625
8.5	\$5,438	\$7,688	\$12,375	\$17,125	\$41,750
9	\$5,500	\$8,125	\$13,688	\$18,375	\$44,875
9.5	\$5,563	\$8,563	\$14,313	\$19,625	\$48,063
10	\$5,625	\$8,625	\$14,375	\$19,688	\$48,125

	STONE SIZE	Total Dia Wt (Size 7)
	0.10ct (Each)	1.90ct tw
(A) TFPR10SI		
	0.15ct (Each)	2.55ct tw
(B) TFPR15SI		
	0.20ct (Each)	3.40ct tw
(B) TFPR20SI		
	0.33ct (Each)	4.16ct tw
(C) TFPR32SI		
	0.50ct (Each)	6.89ct tw
(D) TFPR53SI		

ALL STYLES AVAILABLE IN YELLOW, WHITE & ROSE GOLD

ROUND

3/4TH WAY WEDDING BANDS

STONE SIZE	Total Dia Wt (Size 7)	
0.10ct (Each)	1.70ct tw	 (A) TFRD10SI
0.15ct (Each)	2.25ct tw	 (B) TFRD15SI
0.20ct (Each)	2.60ct tw	 (C) TFRD20SI
0.33ct (Each)	3.52ct tw	 (D) TFRD32SI
0.50ct (Each)	5.83ct tw	 (E) TFRD53SI

ALL STYLES AVAILABLE IN YELLOW, WHITE & ROSE GOLD



14kt

Stone Size	0.10ct (Each)	0.15ct (Each)	0.20ct (Each)	0.33ct (Each)	0.50ct (Each)
4.5	\$4,875	\$7,313	\$10,000	\$16,313	\$38,500
5	\$4,938	\$7,375	\$10,063	\$16,375	\$38,625
5.5	\$5,000	\$7,438	\$10,125	\$16,500	\$38,688
6	\$5,063	\$7,500	\$10,188	\$16,563	\$38,813
6.5	\$5,125	\$7,563	\$10,250	\$16,625	\$38,875
7	\$5,188	\$7,625	\$10,313	\$16,750	\$39,000
7.5	\$5,250	\$7,688	\$10,375	\$16,813	\$39,063
8	\$5,313	\$7,750	\$10,438	\$16,875	\$39,188
8.5	\$5,375	\$8,188	\$11,188	\$18,375	\$42,625
9	\$5,563	\$8,250	\$11,250	\$18,438	\$42,750
9.5	\$5,875	\$8,750	\$12,000	\$19,938	\$46,250
10	\$5,938	\$8,813	\$12,063	\$20,000	\$46,313

18kt

Stone Size	0.10ct (Each)	0.15ct (Each)	0.20ct (Each)	0.33ct (Each)	0.50ct (Each)
4.5	\$5,125	\$7,563	\$10,250	\$16,688	\$38,938
5	\$5,188	\$7,688	\$10,375	\$16,813	\$39,063
5.5	\$5,250	\$7,750	\$10,438	\$16,938	\$39,188
6	\$5,375	\$7,813	\$10,563	\$17,063	\$39,313
6.5	\$5,438	\$7,938	\$10,625	\$17,188	\$39,500
7	\$5,500	\$8,000	\$10,750	\$17,313	\$39,625
7.5	\$5,563	\$8,063	\$10,813	\$17,438	\$39,750
8	\$5,688	\$8,188	\$10,938	\$17,563	\$39,875
8.5	\$5,750	\$8,688	\$11,750	\$19,063	\$43,438
9	\$6,063	\$8,750	\$11,813	\$19,188	\$43,563
9.5	\$6,375	\$9,313	\$12,625	\$20,688	\$47,063
10	\$6,438	\$9,375	\$12,688	\$20,813	\$47,250

Platinum

Stone Size	0.10ct (Each)	0.15ct (Each)	0.20ct (Each)	0.33ct (Each)	0.50ct (Each)
4.5	\$5,313	\$7,813	\$10,500	\$16,875	\$39,125
5	\$5,438	\$7,875	\$10,625	\$17,063	\$39,250
5.5	\$5,500	\$8,000	\$10,688	\$17,188	\$39,438
6	\$5,563	\$8,063	\$10,813	\$17,313	\$39,625
6.5	\$5,688	\$8,188	\$10,875	\$17,500	\$39,750
7	\$5,750	\$8,250	\$11,000	\$17,625	\$39,938
7.5	\$5,813	\$8,313	\$11,125	\$17,813	\$40,125
8	\$5,938	\$8,438	\$11,187	\$17,938	\$40,250
8.5	\$6,000	\$8,938	\$11,312	\$19,500	\$43,813
9	\$6,313	\$9,000	\$11,375	\$19,625	\$44,000
9.5	\$6,625	\$9,563	\$11,500	\$21,188	\$47,563
10	\$6,750	\$9,625	\$11,625	\$21,313	\$47,688

EMERALD

3/4TH WAY WEDDING BANDS



14kt

Stone Size	0.10ct (Each)	0.15ct (Each)	0.20ct (Each)	0.33ct (Each)	0.50ct (Each)
4.5	\$5,563	\$7,938	\$12,813	\$19,375	\$38,125
5	\$5,625	\$8,000	\$12,875	\$19,438	\$38,188
5.5	\$5,688	\$8,063	\$12,938	\$19,500	\$38,250
6	\$5,750	\$8,125	\$13,000	\$19,563	\$38,313
6.5	\$5,813	\$8,188	\$13,063	\$19,625	\$38,438
7	\$5,875	\$8,250	\$13,125	\$19,688	\$38,500
7.5	\$5,938	\$8,313	\$13,188	\$19,750	\$38,563
8	\$6,000	\$8,375	\$13,250	\$19,813	\$38,625
8.5	\$6,063	\$8,438	\$13,313	\$19,875	\$38,750
9	\$6,125	\$8,500	\$13,375	\$19,938	\$38,813
9.5	\$6,188	\$8,563	\$13,438	\$20,000	\$38,875
10	\$6,250	\$8,625	\$13,500	\$20,063	\$38,938

18kt

Stone Size	0.10ct (Each)	0.15ct (Each)	0.20ct (Each)	0.33ct (Each)	0.50ct (Each)
4.5	\$5,750	\$8,188	\$13,063	\$19,688	\$38,438
5	\$5,875	\$8,250	\$13,188	\$19,750	\$38,563
5.5	\$5,938	\$8,375	\$13,250	\$19,813	\$38,688
6	\$6,000	\$8,438	\$13,313	\$19,938	\$38,813
6.5	\$6,063	\$8,500	\$13,438	\$20,000	\$38,938
7	\$6,125	\$8,563	\$13,500	\$20,125	\$39,063
7.5	\$6,188	\$8,688	\$13,563	\$20,188	\$39,125
8	\$6,250	\$8,750	\$13,688	\$20,313	\$39,250
8.5	\$6,375	\$8,813	\$13,750	\$20,375	\$39,375
9	\$6,438	\$9,250	\$14,438	\$21,688	\$42,313
9.5	\$6,500	\$9,750	\$15,125	\$23,000	\$45,250
10	\$6,563	\$9,813	\$15,250	\$23,125	\$45,375

Platinum


Stone Size	0.10ct (Each)	0.15ct (Each)	0.20ct (Each)	0.33ct (Each)	0.50ct (Each)
4.5	\$6,000	\$8,438	\$13,313	\$19,875	\$38,625
5	\$6,063	\$8,500	\$13,375	\$20,000	\$38,813
5.5	\$6,125	\$8,563	\$13,500	\$20,063	\$38,938
6	\$6,250	\$8,688	\$13,563	\$20,188	\$39,063
6.5	\$6,313	\$8,750	\$13,625	\$20,250	\$39,188
7	\$6,375	\$8,813	\$13,750	\$20,375	\$39,375
7.5	\$6,438	\$8,938	\$13,813	\$20,500	\$39,500
8	\$6,500	\$9,000	\$13,938	\$20,563	\$39,625
8.5	\$6,625	\$9,063	\$14,000	\$20,688	\$39,750
9	\$6,688	\$9,563	\$14,688	\$22,000	\$42,750
9.5	\$6,750	\$10,000	\$15,438	\$23,313	\$45,688
10	\$6,813	\$10,063	\$15,500	\$23,375	\$45,875

STONE SIZE	Total Dia Wt (Size 7)
 (A) TFEM10SI	0.10ct (Each) 1.90ct tw
 (B) TFEM15SI	0.15ct (Each) 2.55ct tw
 (C) TFEM20SI	0.20ct (Each) 3.40ct tw
 (D) TFEM32SI	0.33ct (Each) 4.16ct tw
 (E) TFEM53SI	0.50ct (Each) 6.89ct tw

ALL STYLES AVAILABLE IN YELLOW, WHITE & ROSE GOLD

OVAL

3/4TH WAY WEDDING BANDS

	Total Dia Wt (Size 7)	STONE SIZE
 (A) TFOV10SI	1.90ct tw	0.10ct (Each)
 (B) TFOV15SI	2.55ct tw	0.15ct (Each)
 (C) TFOV20SI	3.00ct tw	0.20ct (Each)
 (D) TFOV32SI	4.16ct tw	0.33ct (Each)
 (E) TFOV53SI	5.83ct tw	0.50ct (Each)



14kt

Stone Size	0.10ct (Each)	0.15ct (Each)	0.20ct (Each)	0.33ct (Each)	0.50ct (Each)
Ring Size					
4.5	\$5,750	\$8,688	\$12,438	\$20,625	\$36,750
5	\$5,813	\$8,750	\$12,500	\$20,688	\$36,813
5.5	\$5,875	\$8,813	\$12,563	\$20,750	\$36,938
6	\$5,938	\$8,875	\$12,625	\$20,813	\$37,000
6.5	\$6,000	\$8,938	\$12,688	\$20,938	\$37,125
7	\$6,063	\$9,000	\$12,750	\$21,000	\$37,250
7.5	\$6,125	\$9,063	\$12,813	\$21,063	\$37,313
8	\$6,188	\$9,125	\$12,875	\$21,125	\$37,438
8.5	\$6,250	\$9,188	\$12,938	\$21,188	\$37,500
9	\$6,313	\$9,563	\$13,750	\$22,813	\$40,813
9.5	\$6,375	\$10,063	\$14,563	\$24,375	\$44,125
10	\$6,438	\$10,125	\$14,625	\$24,438	\$44,188

ALL STYLES AVAILABLE IN YELLOW, WHITE & ROSE GOLD

18kt

Stone Size	0.10ct (Each)	0.15ct (Each)	0.20ct (Each)	0.33ct (Each)	0.50ct (Each)
Ring Size					
4.5	\$6,000	\$8,938	\$12,750	\$20,938	\$37,188
5	\$6,063	\$9,000	\$12,813	\$21,063	\$37,313
5.5	\$6,125	\$9,063	\$12,938	\$21,188	\$37,438
6	\$6,188	\$9,125	\$13,000	\$21,313	\$37,625
6.5	\$6,250	\$9,250	\$13,125	\$21,438	\$37,750
7	\$6,313	\$9,313	\$13,188	\$21,500	\$37,875
7.5	\$6,438	\$9,375	\$13,250	\$21,625	\$38,000
8	\$6,500	\$9,500	\$13,375	\$21,750	\$38,188
8.5	\$6,563	\$9,563	\$13,438	\$21,875	\$38,313
9	\$6,625	\$10,063	\$14,313	\$23,500	\$41,688
9.5	\$6,688	\$10,625	\$15,188	\$25,063	\$45,000
10	\$6,750	\$10,688	\$15,250	\$25,188	\$45,125

Platinum

Stone Size	0.10ct (Each)	0.15ct (Each)	0.20ct (Each)	0.33ct (Each)	0.50ct (Each)
Ring Size					
4.5	\$6,188	\$9,125	\$12,938	\$21,125	\$37,438
5	\$6,250	\$9,250	\$13,063	\$21,250	\$37,563
5.5	\$6,375	\$9,313	\$13,125	\$21,438	\$37,750
6	\$6,438	\$9,375	\$13,250	\$21,563	\$37,938
6.5	\$6,500	\$9,500	\$13,375	\$21,688	\$38,125
7	\$6,563	\$9,563	\$13,438	\$21,813	\$38,250
7.5	\$6,625	\$9,625	\$13,563	\$21,938	\$38,438
8	\$6,750	\$9,750	\$13,625	\$22,125	\$38,625
8.5	\$6,813	\$9,813	\$13,750	\$22,250	\$38,750
9	\$6,875	\$10,313	\$14,563	\$23,875	\$42,188
9.5	\$6,938	\$10,875	\$15,438	\$25,500	\$45,563
10	\$7,063	\$10,938	\$15,563	\$25,625	\$45,688

EMERALD

HALF WAY WEDDING BANDS



14kt

Stone Size	0.10ct (Each)	0.15ct (Each)	0.20ct (Each)	0.33ct (Each)	0.50ct (Each)
Ring Size					
4.5	\$3,438	\$4,313	\$6,625	\$12,063	\$21,125
5	\$3,500	\$4,375	\$6,688	\$12,125	\$21,250
5.5	\$3,563	\$4,438	\$6,750	\$12,188	\$21,313
6	\$3,625	\$4,500	\$6,813	\$12,250	\$21,375
6.5	\$3,688	\$4,563	\$6,875	\$12,313	\$21,500
7	\$3,750	\$4,625	\$6,938	\$12,375	\$21,563
7.5	\$3,813	\$4,688	\$7,000	\$12,438	\$21,688
8	\$3,875	\$4,750	\$7,063	\$12,500	\$21,750
8.5	\$4,250	\$5,438	\$8,250	\$12,563	\$27,500
9	\$4,313	\$5,500	\$8,313	\$12,625	\$27,563
9.5	\$4,375	\$5,563	\$8,375	\$12,688	\$27,688
10	\$4,438	\$5,625	\$8,438	\$12,750	\$27,750

18kt

Stone Size	0.10ct (Each)	0.15ct (Each)	0.20ct (Each)	0.33ct (Each)	0.50ct (Each)
Ring Size					
4.5	\$3,625	\$4,500	\$6,875	\$12,375	\$21,563
5	\$3,750	\$4,625	\$6,938	\$12,438	\$21,688
5.5	\$3,813	\$4,688	\$7,000	\$12,563	\$21,813
6	\$3,875	\$4,750	\$7,063	\$12,625	\$21,938
6.5	\$3,938	\$4,813	\$7,188	\$12,750	\$22,063
7	\$4,000	\$4,875	\$7,250	\$12,813	\$22,188
7.5	\$4,063	\$5,000	\$7,313	\$12,875	\$22,313
8	\$4,188	\$5,063	\$7,438	\$13,000	\$22,438
8.5	\$4,688	\$5,875	\$8,750	\$13,063	\$28,250
9	\$4,750	\$5,938	\$8,813	\$13,188	\$28,375
9.5	\$4,813	\$6,000	\$8,875	\$13,250	\$28,500
10	\$4,875	\$6,063	\$9,000	\$13,375	\$28,625

STONE SIZE Total Dia Wt (Size 7)

 (A) HWEM10SI	0.10ct (Each)	1.10ct tw
 (B) HWEM15SI	0.15ct (Each)	1.35ct tw
 (C) HWEM20SI	0.20ct (Each)	1.80ct tw
 (D) HWEM32SI	0.33ct (Each)	2.88ct tw
 (E) HWEM53SI	0.50ct (Each)	3.71ct tw

ALL STYLES AVAILABLE IN YELLOW, WHITE & ROSE GOLD

Platinum

Stone Size	0.10ct (Each)	0.15ct (Each)	0.20ct (Each)	0.33ct (Each)	0.50ct (Each)
Ring Size					
4.5	\$3,875	\$4,750	\$7,063	\$12,563	\$21,750
5	\$3,938	\$4,813	\$7,188	\$12,688	\$21,875
5.5	\$4,063	\$4,938	\$7,250	\$12,813	\$22,063
6	\$4,125	\$5,000	\$7,313	\$12,875	\$22,188
6.5	\$4,188	\$5,063	\$7,438	\$13,000	\$22,375
7	\$4,250	\$5,125	\$7,500	\$13,063	\$22,500
7.5	\$4,313	\$5,250	\$7,563	\$13,188	\$22,688
8	\$4,438	\$5,313	\$7,688	\$13,250	\$22,813
8.5	\$4,938	\$6,125	\$9,000	\$13,375	\$28,625
9	\$5,000	\$6,188	\$9,063	\$13,438	\$28,813
9.5	\$5,063	\$6,250	\$9,188	\$13,563	\$28,938
10	\$5,188	\$6,375	\$9,250	\$13,625	\$29,125

ROUND

HALF WAY WEDDING BANDS








14kt

Stone Size	0.10ct (Each)	0.15ct (Each)	0.20ct (Each)	0.33ct (Each)	0.50ct (Each)
4.5	\$2,938	\$3,813	\$5,750	\$10,750	\$24,938
5	\$3,188	\$4,313	\$6,500	\$10,813	\$25,000
5.5	\$3,250	\$4,375	\$6,563	\$10,875	\$25,125
6	\$3,563	\$4,875	\$7,313	\$11,000	\$25,250
6.5	\$3,625	\$4,938	\$7,375	\$11,063	\$25,313
7	\$3,688	\$5,000	\$7,438	\$11,125	\$25,438
7.5	\$3,750	\$5,063	\$7,500	\$11,188	\$25,563
8	\$4,000	\$5,125	\$7,563	\$11,250	\$25,625
8.5	\$4,063	\$5,188	\$7,625	\$11,375	\$25,750
9	\$4,313	\$5,250	\$7,688	\$14,250	\$25,875
9.5	\$4,375	\$5,313	\$7,750	\$14,313	\$25,938
10	\$4,438	\$5,375	\$7,813	\$14,375	\$26,063

Platinum

Stone Size	0.10ct (Each)	0.15ct (Each)	0.20ct (Each)	0.33ct (Each)	0.50ct (Each)
4.5	\$3,375	\$4,313	\$6,250	\$11,375	\$25,625
5	\$3,688	\$4,813	\$7,063	\$11,500	\$25,813
5.5	\$3,813	\$4,875	\$7,188	\$11,625	\$26,000
6	\$4,125	\$5,438	\$7,938	\$11,688	\$26,188
6.5	\$4,188	\$5,500	\$8,063	\$11,813	\$26,375
7	\$4,250	\$5,563	\$8,125	\$11,938	\$26,563
7.5	\$4,375	\$5,688	\$8,250	\$12,063	\$26,750
8	\$4,688	\$5,750	\$8,313	\$12,188	\$26,938
8.5	\$4,750	\$5,813	\$8,438	\$12,313	\$27,125
9	\$5,063	\$5,938	\$8,563	\$15,250	\$27,313
9.5	\$5,125	\$6,000	\$8,625	\$15,375	\$27,500
10	\$5,250	\$6,125	\$8,750	\$15,500	\$27,688

STONE SIZE	Total Dia Wt (Size 7)	
0.10ct (Each)	1.10ct tw	 (A) HWRD10SI
0.15ct (Each)	1.35ct tw	 (B) HWRD15SI
0.20ct (Each)	1.80ct tw	 (C) HWRD20SI
0.33ct (Each)	2.24ct tw	 (D) HWRD32SI
0.50ct (Each)	3.71ct tw	 (E) HWRD53SI

ALL STYLES AVAILABLE IN YELLOW, WHITE & ROSE GOLD

18kt

Stone Size	0.10ct (Each)	0.15ct (Each)	0.20ct (Each)	0.33ct (Each)	0.50ct (Each)
4.5	\$3,125	\$4,063	\$6,000	\$11,125	\$25,375
5	\$3,438	\$4,563	\$6,813	\$11,250	\$25,563
5.5	\$3,563	\$4,688	\$6,938	\$11,313	\$25,688
6	\$3,875	\$5,188	\$7,688	\$11,438	\$25,875
6.5	\$3,938	\$5,250	\$7,813	\$11,563	\$26,000
7	\$4,000	\$5,313	\$7,875	\$11,688	\$26,188
7.5	\$4,063	\$5,438	\$8,000	\$11,813	\$26,313
8	\$4,438	\$5,500	\$8,063	\$11,938	\$26,500
8.5	\$4,500	\$5,563	\$8,188	\$12,000	\$26,625
9	\$4,813	\$5,688	\$8,250	\$14,938	\$26,813
9.5	\$4,875	\$5,750	\$8,375	\$15,063	\$26,938
10	\$4,938	\$5,813	\$8,438	\$15,188	\$27,125

PRINCESS

HALF WAY WEDDING BANDS



14kt

Stone Size	0.10ct (Each)	0.15ct (Each)	0.20ct (Each)	0.33ct (Each)	0.50ct (Each)
Ring Size					
4.5	\$2,438	\$3,875	\$6,000	\$11,250	\$22,125
5	\$2,688	\$3,938	\$6,063	\$11,313	\$22,188
5.5	\$2,750	\$4,000	\$6,125	\$11,375	\$22,250
6	\$2,938	\$4,063	\$6,188	\$11,438	\$22,313
6.5	\$3,000	\$4,125	\$6,250	\$11,500	\$22,375
7	\$3,063	\$4,188	\$6,313	\$11,563	\$22,438
7.5	\$3,125	\$4,250	\$6,375	\$11,625	\$22,500
8	\$3,188	\$4,313	\$6,438	\$11,688	\$22,563
8.5	\$3,250	\$4,375	\$6,500	\$11,750	\$22,625
9	\$3,313	\$4,438	\$6,563	\$11,813	\$22,688
9.5	\$3,375	\$4,500	\$6,625	\$11,875	\$22,750
10	\$3,438	\$4,563	\$6,688	\$11,938	\$22,813

18kt

Stone Size	0.10ct (Each)	0.15ct (Each)	0.20ct (Each)	0.33ct (Each)	0.50ct (Each)
Ring Size					
4.5	\$2,563	\$4,063	\$6,250	\$11,500	\$22,375
5	\$2,813	\$4,125	\$6,313	\$11,563	\$22,500
5.5	\$2,875	\$4,188	\$6,375	\$11,625	\$22,563
6	\$3,125	\$4,250	\$6,438	\$11,688	\$22,688
6.5	\$3,188	\$4,313	\$6,500	\$11,813	\$22,750
7	\$3,250	\$4,375	\$6,563	\$11,875	\$22,875
7.5	\$3,313	\$4,438	\$6,625	\$11,938	\$22,938
8	\$3,375	\$4,500	\$6,688	\$12,000	\$23,063
8.5	\$3,563	\$5,250	\$7,938	\$12,125	\$23,125
9	\$3,813	\$5,313	\$8,000	\$12,188	\$23,188
9.5	\$3,875	\$5,375	\$8,063	\$12,250	\$23,313
10	\$3,938	\$5,438	\$8,125	\$12,313	\$23,375

Platinum

Stone Size	0.10ct (Each)	0.15ct (Each)	0.20ct (Each)	0.33ct (Each)	0.50ct (Each)
Ring Size					
4.5	\$2,813	\$4,250	\$6,438	\$11,750	\$22,500
5	\$3,063	\$4,313	\$6,500	\$11,813	\$22,625
5.5	\$3,125	\$4,375	\$6,563	\$11,875	\$22,750
6	\$3,375	\$4,438	\$6,625	\$11,938	\$22,875
6.5	\$3,438	\$4,500	\$6,688	\$12,063	\$23,000
7	\$3,500	\$4,563	\$6,813	\$12,125	\$23,125
7.5	\$3,563	\$4,625	\$6,875	\$12,188	\$23,188
8	\$3,625	\$4,688	\$6,938	\$12,250	\$23,313
8.5	\$3,813	\$5,500	\$8,188	\$12,375	\$23,438
9	\$4,063	\$5,563	\$8,250	\$12,438	\$23,563
9.5	\$4,125	\$5,625	\$8,313	\$12,500	\$23,688
10	\$4,188	\$5,688	\$8,375	\$12,625	\$23,813

	Total Dia Wt (Size 7)	STONE SIZE
 (A) HWPR10SI	1.10ct tw	0.10ct (Each)
 (B) HWPR15SI	1.35ct tw	0.15ct (Each)
 (C) HWPR20SI	1.80ct tw	0.20ct (Each)
 (D) HWPR32SI	2.88ct tw	0.33ct (Each)
 (E) HWPR53SI	3.71ct tw	0.50ct (Each)

ALL STYLES AVAILABLE IN YELLOW, WHITE & ROSE GOLD

OVAL

HALF WAY WEDDING BANDS

STONE SIZE	Total Dia Wt (Size 7)	
0.10ct (Each)	1.10ct tw	 (A) HWOV10SI
0.15ct (Each)	1.35ct tw	 (B) HWOV15SI
0.20ct (Each)	1.80ct tw	 (C) HWOV20SI
0.33ct (Each)	2.24ct tw	 (D) HWOV32SI
0.50ct (Each)	3.71ct tw	 (E) HWOV53SI

ALL STYLES AVAILABLE IN YELLOW, WHITE & ROSE GOLD



14kt

Stone Size	0.10ct (Each)	0.15ct (Each)	0.20ct (Each)	0.33ct (Each)	0.50ct (Each)
4.5	\$3,313	\$5,063	\$7,875	\$11,688	\$23,875
5	\$3,375	\$5,125	\$7,938	\$11,750	\$23,938
5.5	\$3,625	\$5,188	\$8,000	\$11,813	\$24,063
6	\$3,938	\$5,250	\$8,063	\$11,875	\$24,125
6.5	\$4,000	\$5,313	\$8,125	\$11,938	\$24,250
7	\$4,063	\$5,375	\$8,188	\$12,000	\$24,313
7.5	\$4,125	\$5,438	\$8,250	\$12,063	\$24,438
8	\$4,188	\$5,500	\$8,313	\$12,125	\$24,500
8.5	\$4,438	\$5,563	\$8,375	\$15,188	\$24,625
9	\$4,750	\$6,438	\$8,438	\$15,250	\$24,688
9.5	\$4,813	\$6,500	\$8,500	\$15,375	\$24,813
10	\$4,875	\$6,563	\$8,563	\$15,438	\$24,875

18kt

Stone Size	0.10ct (Each)	0.15ct (Each)	0.20ct (Each)	0.33ct (Each)	0.50ct (Each)
4.5	\$3,500	\$5,375	\$8,188	\$12,000	\$24,313
5	\$3,563	\$5,438	\$8,250	\$12,125	\$24,438
5.5	\$3,938	\$5,500	\$8,375	\$12,188	\$24,563
6	\$4,250	\$5,563	\$8,438	\$12,313	\$24,688
6.5	\$4,313	\$5,625	\$8,563	\$12,438	\$24,875
7	\$4,375	\$5,750	\$8,625	\$12,500	\$25,000
7.5	\$4,438	\$5,813	\$8,750	\$12,625	\$25,125
8	\$4,563	\$5,875	\$8,813	\$12,750	\$25,250
8.5	\$4,875	\$5,938	\$8,938	\$15,813	\$25,438
9	\$5,188	\$6,938	\$9,000	\$15,938	\$25,563
9.5	\$5,250	\$7,000	\$9,125	\$16,063	\$25,688
10	\$5,313	\$7,125	\$9,188	\$16,188	\$25,813


Platinum

Stone Size	0.10ct (Each)	0.15ct (Each)	0.20ct (Each)	0.33ct (Each)	0.50ct (Each)
4.5	\$3,750	\$5,563	\$8,438	\$12,250	\$24,500
5	\$3,813	\$5,625	\$8,500	\$12,375	\$24,688
5.5	\$4,125	\$5,750	\$8,625	\$12,438	\$24,875
6	\$4,500	\$5,813	\$8,688	\$12,563	\$25,000
6.5	\$4,563	\$5,875	\$8,813	\$12,688	\$25,188
7	\$4,625	\$6,000	\$8,938	\$12,813	\$25,375
7.5	\$4,688	\$6,063	\$9,000	\$12,938	\$25,563
8	\$4,813	\$6,125	\$9,125	\$13,000	\$25,688
8.5	\$5,125	\$6,250	\$9,188	\$16,125	\$25,875
9	\$5,438	\$7,188	\$9,313	\$16,250	\$26,063
9.5	\$5,500	\$7,313	\$9,375	\$16,375	\$26,188
10	\$5,625	\$7,375	\$9,500	\$16,438	\$26,375





EMERALD

EAST-WEST ANNIVERSARY BANDS

	STONE SIZE	Total Dia Wt (Size 7)
 (A) EWEM10SI	0.10ct (Each)	2.10ct tw
 (B) EWEM24SI	0.25ct (Each)	3.84ct tw

MARQUISE

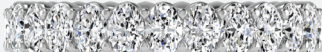

EAST-WEST ANNIVERSARY BANDS

	STONE SIZE	Total Dia Wt (Size 7)
 (A) EWMQ10SI	0.10ct (Each)	1.30ct tw
 (B) EWMQ24SI	0.25ct (Each)	2.40ct tw



OVAL

EAST-WEST ANNIVERSARY BANDS

	STONE SIZE	Total Dia Wt (Size 7)
 (A) EWOV10SI	0.10ct (Each)	2.50ct tw
 (B) EWOV24SI	0.25ct (Each)	3.36ct tw



EMERALD

Stone Size	14kt		18kt		Platinum	
	0.10ct (Each)	0.25ct (Each)	0.10ct (Each)	0.25ct (Each)	0.10ct (Each)	0.25ct (Each)
Ring Size						
4.5	\$5,000	\$13,688	\$5,125	\$13,938	\$5,375	\$14,188
5	\$5,063	\$13,750	\$5,188	\$14,000	\$5,438	\$14,250
5.5	\$5,188	\$13,813	\$5,375	\$14,063	\$5,625	\$14,313
6	\$5,250	\$14,563	\$5,438	\$14,813	\$5,688	\$15,063
6.5	\$5,438	\$14,625	\$5,625	\$14,875	\$5,875	\$15,125
7	\$5,500	\$14,688	\$5,688	\$14,938	\$5,938	\$15,188
7.5	\$5,688	\$15,438	\$5,875	\$15,688	\$6,125	\$15,938
8	\$5,750	\$15,500	\$5,938	\$15,750	\$6,188	\$16,000
8.5	\$5,938	\$15,563	\$6,188	\$15,813	\$6,438	\$16,063
9	\$6,000	\$16,375	\$6,250	\$16,625	\$6,500	\$16,875
9.5	\$6,188	\$16,438	\$6,438	\$16,688	\$6,688	\$16,938
10	\$6,250	\$16,500	\$6,500	\$16,750	\$6,750	\$17,000

Stone Size	14kt		18kt		Platinum	
	0.10ct (Each)	0.25ct (Each)	0.10ct (Each)	0.25ct (Each)	0.10ct (Each)	0.25ct (Each)
Ring Size						
4.5	\$4,500	\$10,875	\$4,625	\$11,125	\$4,875	\$11,438
5	\$4,563	\$10,938	\$4,688	\$11,188	\$4,938	\$11,500
5.5	\$4,625	\$12,000	\$4,750	\$12,250	\$5,000	\$12,563
6	\$4,688	\$12,063	\$4,813	\$12,313	\$5,063	\$12,625
6.5	\$4,813	\$12,125	\$4,875	\$12,375	\$5,188	\$12,688
7	\$4,875	\$12,188	\$4,938	\$12,438	\$5,250	\$12,750
7.5	\$4,938	\$12,250	\$5,000	\$12,500	\$5,313	\$12,813
8	\$5,000	\$13,125	\$5,063	\$13,438	\$5,375	\$13,688
8.5	\$5,188	\$13,188	\$5,250	\$13,500	\$5,625	\$13,750
9	\$5,250	\$13,250	\$5,313	\$13,563	\$5,688	\$13,813
9.5	\$5,313	\$13,313	\$5,375	\$13,625	\$5,750	\$13,875
10	\$5,375	\$13,375	\$5,438	\$13,750	\$5,813	\$13,938

MARQUISE

OVAL

Stone Size	14kt		18kt		Platinum	
	0.10ct (Each)	0.25ct (Each)	0.10ct (Each)	0.25ct (Each)	0.10ct (Each)	0.25ct (Each)
Ring Size						
4.5	\$4,813	\$13,875	\$5,000	\$14,125	\$5,313	\$14,375
5	\$4,875	\$13,938	\$5,063	\$14,188	\$5,375	\$14,438
5.5	\$5,063	\$14,000	\$5,250	\$14,250	\$5,625	\$14,500
6	\$5,125	\$14,875	\$5,313	\$15,125	\$5,688	\$15,375
6.5	\$5,375	\$14,938	\$5,563	\$15,188	\$5,938	\$15,438
7	\$5,438	\$15,000	\$5,625	\$15,250	\$6,000	\$15,500
7.5	\$5,625	\$15,875	\$5,813	\$16,188	\$6,250	\$16,438
8	\$5,688	\$15,938	\$5,875	\$16,250	\$6,313	\$16,500
8.5	\$5,750	\$16,000	\$5,938	\$16,313	\$6,375	\$16,563
9	\$5,938	\$16,063	\$6,125	\$16,438	\$6,500	\$16,625
9.5	\$6,000	\$16,938	\$6,188	\$17,250	\$6,563	\$17,500
10	\$6,063	\$17,000	\$6,250	\$17,313	\$6,625	\$17,563

OVAL



14kt

Stone Size	0.15ct (Each)	0.20ct (Each)	0.33ct (Each)	0.50ct (Each)	0.75ct (Each)
Ring Size					
4.5	\$3,375	\$5,000	\$8,750	\$17,375	\$32,500
5	\$3,437	\$5,063	\$8,813	\$17,437	\$32,625
5.5	\$3,500	\$5,125	\$8,875	\$17,500	\$32,750
6	\$3,562	\$5,188	\$8,938	\$17,562	\$32,875
6.5	\$3,625	\$5,250	\$9,000	\$17,625	\$33,000
7	\$3,687	\$5,313	\$9,063	\$17,687	\$33,125
7.5	\$3,750	\$5,375	\$9,125	\$17,750	\$33,250
8	\$3,812	\$5,438	\$9,188	\$17,812	\$33,375
8.5	\$3,875	\$5,500	\$9,250	\$17,875	\$33,500
9	\$3,937	\$5,563	\$9,313	\$17,937	\$33,625
9.5	\$4,000	\$5,625	\$9,500	\$18,000	\$33,688
10	\$4,062	\$5,688	\$9,563	\$18,062	\$33,813

5 STONE WEDDING BANDS

	Total Dia Wt (Size 7)	STONE SIZE
 (A) FSOV15SI	0.75ct tw	0.15ct (Each)
 (B) FSOV20SI	1ct tw	0.20ct (Each)
 (C) FSOV32SI	1.60ct tw	0.33ct (Each)
 (D) FSOV53SI	2.65ct tw	0.50ct (Each)
 (E) FSOV72SI	3.60ct tw	0.75ct (Each)

ALL STYLES AVAILABLE IN YELLOW, WHITE & ROSE GOLD

18kt

Stone Size	0.15ct (Each)	0.20ct (Each)	0.33ct (Each)	0.50ct (Each)	0.75ct (Each)
Ring Size					
4.5	\$3,813	\$5,438	\$9,250	\$17,938	\$33,063
5	\$3,875	\$5,500	\$9,313	\$18,000	\$33,250
5.5	\$3,938	\$5,563	\$9,375	\$18,063	\$33,438
6	\$4,000	\$5,625	\$9,438	\$18,125	\$33,625
6.5	\$4,063	\$5,688	\$9,500	\$18,188	\$33,750
7	\$4,125	\$5,750	\$9,563	\$18,250	\$33,938
7.5	\$4,188	\$5,813	\$9,625	\$18,313	\$34,125
8	\$4,250	\$5,875	\$9,688	\$18,375	\$34,313
8.5	\$4,313	\$5,938	\$9,750	\$18,438	\$34,500
9	\$4,375	\$6,000	\$9,813	\$18,500	\$34,688
9.5	\$4,438	\$6,063	\$9,875	\$18,563	\$34,813
10	\$4,500	\$6,125	\$9,938	\$18,625	\$35,000

Platinum

Stone Size	0.15ct (Each)	0.20ct (Each)	0.33ct (Each)	0.50ct (Each)	0.75ct (Each)
Ring Size					
4.5	\$4,063	\$5,750	\$9,500	\$18,188	\$33,125
5	\$4,125	\$5,813	\$9,563	\$18,250	\$33,313
5.5	\$4,188	\$5,875	\$9,625	\$18,313	\$33,500
6	\$4,250	\$5,938	\$9,688	\$18,375	\$33,688
6.5	\$4,313	\$6,000	\$9,750	\$18,438	\$33,875
7	\$4,375	\$6,125	\$9,813	\$18,500	\$34,063
7.5	\$4,438	\$6,188	\$9,875	\$18,563	\$34,250
8	\$4,500	\$6,250	\$9,938	\$18,625	\$34,438
8.5	\$4,563	\$6,313	\$10,000	\$18,688	\$34,625
9	\$4,625	\$6,375	\$10,063	\$18,750	\$34,813
9.5	\$4,688	\$6,438	\$10,125	\$18,813	\$35,000
10	\$4,750	\$6,500	\$10,188	\$18,875	\$35,188

EMERALD

5 STONE WEDDING BANDS

STONE SIZE	Total Dia Wt (Size 7)	
0.15ct (Each)	0.75ct tw	 (A) FSEM15SI
0.20ct (Each)	1ct tw	 (B) FSEM20SI
0.33ct (Each)	1.60ct tw	 (C) FSEM32SI
0.50ct (Each)	2.65ct tw	 (D) FSEM53SI
0.75ct (Each)	3.60ct tw	 (E) FSEM72SI



14kt

Stone Size	0.15ct (Each)	0.20ct (Each)	0.33ct (Each)	0.50ct (Each)	0.75ct (Each)
4.5	\$2,937	\$4,250	\$7,313	\$15,500	\$28,063
5	\$3,000	\$4,313	\$7,375	\$15,562	\$28,125
5.5	\$3,063	\$4,438	\$7,438	\$15,625	\$28,250
6	\$3,125	\$4,500	\$7,500	\$15,687	\$28,375
6.5	\$3,188	\$4,563	\$7,563	\$15,750	\$28,500
7	\$3,250	\$4,625	\$7,625	\$15,812	\$28,625
7.5	\$3,313	\$4,688	\$7,750	\$15,875	\$28,750
8	\$3,375	\$4,750	\$7,813	\$15,938	\$28,875
8.5	\$3,438	\$4,813	\$7,875	\$16,000	\$29,000
9	\$3,500	\$4,875	\$7,938	\$16,062	\$29,125
9.5	\$3,563	\$4,938	\$8,000	\$16,125	\$29,250
10	\$3,625	\$5,000	\$8,125	\$16,250	\$29,313

ALL STYLES AVAILABLE IN YELLOW, WHITE & ROSE GOLD

18kt

Stone Size	0.15ct (Each)	0.20ct (Each)	0.33ct (Each)	0.50ct (Each)	0.75ct (Each)
4.5	\$3,375	\$4,813	\$7,813	\$16,000	\$28,563
5	\$3,438	\$4,875	\$7,875	\$16,063	\$28,750
5.5	\$3,500	\$4,938	\$7,938	\$16,125	\$28,938
6	\$3,563	\$5,000	\$8,000	\$16,188	\$29,125
6.5	\$3,625	\$5,063	\$8,063	\$16,250	\$29,250
7	\$3,688	\$5,125	\$8,125	\$16,313	\$29,438
7.5	\$3,750	\$5,188	\$8,188	\$16,375	\$29,625
8	\$3,813	\$5,250	\$8,250	\$16,438	\$29,813
8.5	\$3,875	\$5,313	\$8,313	\$16,500	\$30,000
9	\$3,938	\$5,375	\$8,375	\$16,563	\$30,188
9.5	\$4,000	\$5,438	\$8,438	\$16,625	\$30,313
10	\$4,063	\$5,500	\$8,500	\$16,688	\$30,500

Platinum

Stone Size	0.15ct (Each)	0.20ct (Each)	0.33ct (Each)	0.50ct (Each)	0.75ct (Each)
4.5	\$3,625	\$5,063	\$8,125	\$16,250	\$28,625
5	\$3,688	\$5,125	\$8,188	\$16,313	\$28,813
5.5	\$3,750	\$5,188	\$8,250	\$16,375	\$29,000
6	\$3,813	\$5,250	\$8,313	\$16,438	\$29,188
6.5	\$3,875	\$5,313	\$8,375	\$16,500	\$29,375
7	\$3,938	\$5,375	\$8,438	\$16,563	\$29,563
7.5	\$4,000	\$5,438	\$8,500	\$16,625	\$29,750
8	\$4,063	\$5,500	\$8,563	\$16,688	\$29,938
8.5	\$4,125	\$5,563	\$8,625	\$16,750	\$30,125
9	\$4,188	\$5,625	\$8,750	\$16,813	\$30,313
9.5	\$4,250	\$5,688	\$8,813	\$16,875	\$30,500
10	\$4,313	\$5,750	\$8,875	\$16,938	\$30,688

ROUND

5 STONE WEDDING BANDS



14kt

Stone Size	0.15ct (Each)	0.20ct (Each)	0.33ct (Each)	0.50ct (Each)	0.75ct (Each)
Ring Size					
4.5	\$3,375	\$4,813	\$8,438	\$18,563	\$35,750
5	\$3,438	\$4,875	\$8,500	\$18,625	\$35,875
5.5	\$3,500	\$4,938	\$8,563	\$18,688	\$36,000
6	\$3,563	\$5,000	\$8,625	\$18,750	\$36,125
6.5	\$3,625	\$5,063	\$8,688	\$18,813	\$36,188
7	\$3,688	\$5,125	\$8,750	\$18,875	\$36,313
7.5	\$3,750	\$5,188	\$8,813	\$18,938	\$36,438
8	\$3,813	\$5,250	\$8,875	\$19,000	\$36,563
8.5	\$3,875	\$5,313	\$8,938	\$19,063	\$36,688
9	\$3,938	\$5,375	\$9,000	\$19,125	\$36,813
9.5	\$4,000	\$5,438	\$9,063	\$19,188	\$36,938
10	\$4,063	\$5,500	\$9,125	\$19,250	\$37,063

	Total Dia Wt (Size 7)	STONE SIZE
 (A) FSRD15SI	0.75ct tw	0.15ct (Each)
 (B) FSRD20SI	1ct tw	0.20ct (Each)
 (C) FSRD32SI	1.60ct tw	0.33ct (Each)
 (D) FSRD53SI	2.65ct tw	0.50ct (Each)
 (E) FSRD72SI	3.60ct tw	0.75ct (Each)

ALL STYLES AVAILABLE IN YELLOW, WHITE & ROSE GOLD

18kt






Stone Size	0.15ct (Each)	0.20ct (Each)	0.33ct (Each)	0.50ct (Each)	0.75ct (Each)
Ring Size					
4.5	\$3,875	\$5,375	\$9,000	\$19,188	\$36,250
5	\$3,938	\$5,438	\$9,063	\$19,250	\$36,438
5.5	\$4,000	\$5,500	\$9,125	\$19,313	\$36,625
6	\$4,063	\$5,563	\$9,188	\$19,375	\$36,813
6.5	\$4,125	\$5,625	\$9,250	\$19,438	\$37,000
7	\$4,188	\$5,688	\$9,313	\$19,500	\$37,188
7.5	\$4,250	\$5,750	\$9,375	\$19,563	\$37,313
8	\$4,313	\$5,813	\$9,438	\$19,625	\$37,500
8.5	\$4,375	\$5,875	\$9,500	\$19,688	\$37,688
9	\$4,438	\$5,938	\$9,563	\$19,750	\$37,875
9.5	\$4,500	\$6,000	\$9,625	\$19,813	\$38,063
10	\$4,563	\$6,063	\$9,688	\$19,875	\$38,250

Platinum

Stone Size	0.15ct (Each)	0.20ct (Each)	0.33ct (Each)	0.50ct (Each)	0.75ct (Each)
Ring Size					
4.5	\$4,125	\$5,688	\$9,313	\$19,500	\$36,313
5	\$4,188	\$5,750	\$9,375	\$19,563	\$36,500
5.5	\$4,250	\$5,813	\$9,438	\$19,625	\$36,750
6	\$4,313	\$5,875	\$9,500	\$19,688	\$36,938
6.5	\$4,375	\$5,938	\$9,563	\$19,750	\$37,125
7	\$4,438	\$6,000	\$9,625	\$19,813	\$37,313
7.5	\$4,500	\$6,063	\$9,688	\$19,875	\$37,500
8	\$4,563	\$6,125	\$9,750	\$19,938	\$37,688
8.5	\$4,625	\$6,188	\$9,813	\$20,000	\$37,875
9	\$4,688	\$6,250	\$9,875	\$20,063	\$38,063
9.5	\$4,750	\$6,313	\$9,938	\$20,125	\$38,250
10	\$4,813	\$6,375	\$10,000	\$20,188	\$38,438

PRINCESS

5 STONE WEDDING BANDS

STONE SIZE	Total Dia Wt (Size 7)	
0.15ct (Each)	0.75ct tw	 (A) FSPR15SI
0.20ct (Each)	1ct tw	 (B) FSPR20SI
0.33ct (Each)	1.60ct tw	 (C) FSPR32SI
0.50ct (Each)	2.65ct tw	 (D) FSPR53SI
0.75ct (Each)	3.60ct tw	 (E) FSPR72SI



14kt

Stone Size	0.15ct (Each)	0.20ct (Each)	0.33ct (Each)	0.50ct (Each)	0.75ct (Each)
4.5	\$2,813	\$4,000	\$6,938	\$16,313	\$31,250
5	\$2,875	\$4,063	\$7,000	\$16,375	\$31,375
5.5	\$2,938	\$4,125	\$7,063	\$16,438	\$31,500
6	\$3,000	\$4,188	\$7,125	\$16,500	\$31,625
6.5	\$3,063	\$4,250	\$7,188	\$16,563	\$31,750
7	\$3,125	\$4,313	\$7,250	\$16,625	\$31,813
7.5	\$3,188	\$4,375	\$7,313	\$16,688	\$31,938
8	\$3,250	\$4,438	\$7,375	\$16,750	\$32,063
8.5	\$3,313	\$4,500	\$7,438	\$16,813	\$32,188
9	\$3,375	\$4,563	\$7,500	\$17,000	\$32,313
9.5	\$3,438	\$4,625	\$7,563	\$17,063	\$32,438
10	\$3,500	\$4,688	\$7,625	\$17,125	\$32,563

ALL STYLES AVAILABLE IN YELLOW, WHITE & ROSE GOLD

18kt

Stone Size	0.15ct (Each)	0.20ct (Each)	0.33ct (Each)	0.50ct (Each)	0.75ct (Each)
4.5	\$3,188	\$4,375	\$7,375	\$16,813	\$31,750
5	\$3,250	\$4,438	\$7,438	\$16,875	\$31,938
5.5	\$3,313	\$4,500	\$7,500	\$16,938	\$32,125
6	\$3,375	\$4,563	\$7,563	\$17,000	\$32,313
6.5	\$3,438	\$4,625	\$7,625	\$17,063	\$32,500
7	\$3,500	\$4,688	\$7,688	\$17,125	\$32,688
7.5	\$3,563	\$4,750	\$7,750	\$17,188	\$32,813
8	\$3,625	\$4,813	\$7,813	\$17,250	\$33,000
8.5	\$3,688	\$4,875	\$7,875	\$17,313	\$33,188
9	\$3,750	\$4,938	\$7,938	\$17,375	\$33,375
9.5	\$3,813	\$5,000	\$8,000	\$17,438	\$33,563
10	\$3,875	\$5,063	\$8,063	\$17,500	\$33,750

Platinum

Stone Size	0.15ct (Each)	0.20ct (Each)	0.33ct (Each)	0.50ct (Each)	0.75ct (Each)
4.5	\$3,438	\$4,625	\$7,625	\$17,000	\$31,875
5	\$3,500	\$4,688	\$7,688	\$17,063	\$32,063
5.5	\$3,563	\$4,750	\$7,750	\$17,125	\$32,250
6	\$3,625	\$4,813	\$7,813	\$17,188	\$32,438
6.5	\$3,688	\$4,875	\$7,875	\$17,250	\$32,625
7	\$3,750	\$4,938	\$7,938	\$17,313	\$32,813
7.5	\$3,813	\$5,000	\$8,000	\$17,375	\$33,000
8	\$3,875	\$5,063	\$8,063	\$17,438	\$33,188
8.5	\$3,938	\$5,125	\$8,125	\$17,500	\$33,375
9	\$4,000	\$5,188	\$8,188	\$17,563	\$33,563
9.5	\$4,063	\$5,250	\$8,250	\$17,625	\$33,750
10	\$4,125	\$5,313	\$8,313	\$17,688	\$33,938



Gem Star

www.gemstarco.com

5525 N. MACARTHUR BOULEVARD, SUITE 290, IRVING, TX 75038

Toll Free- 1.866.368.5700 - Sales@gemstarco.com

Items Are Enlarged to show details. Not responsible for any typographical errors. Gem Star reserves all rights to change the sale prices without prior notice.
All diamonds are **NATURAL MINED**. All Prices are retail 2.5 key. All prices are in USD.